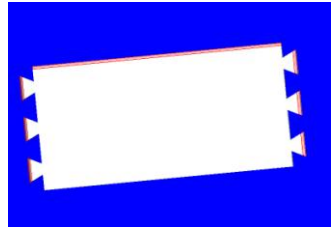


Hive Assembly Instructions

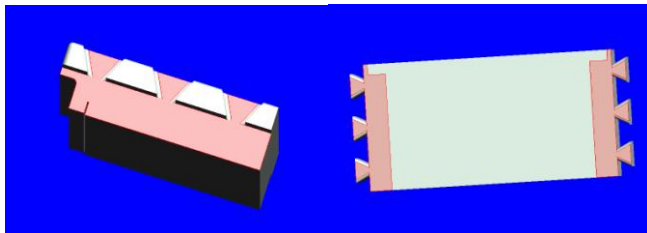
Warning: Always work in a well ventilated space

1. Before applying any glue ensure that you familiarise yourself with the all parts of the hive and how they will assemble.

2. The Front section has the handle recess; the Side section is flat. The Side has rounded corners on the outside face at the top and sides (shown).



3. Spread a thin layer of glue over the flat face of the Front (shown hatched in red below left), and the corresponding part of the Side, (shown hatched in red below right).

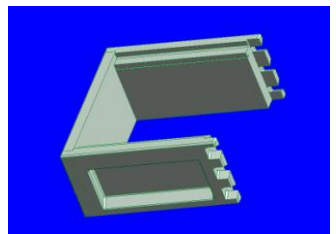


Do not apply any glue to the angled faces of the dovetails, it is contact adhesive and will bond instantly preventing the hive from being assembled.

3. Allow the glue to become touch dry and press the sections firmly together. Fix two Front sections on to one Side first, then fit the second Side into position.

4. Glue the brood box and supers as shown.

5. Press the frame runners into position in the slot at the top edge of the Front sections.



Note: The glue supplied should be more than sufficient to assemble the hive. Should any additional glue be required no solvent based products should be used (eg Evo Stick/Bostik), as they will melt the polystyrene. UHU Por is specifically designed for use with foam products and is **NOT** the same as normal UHU. PVC is not suitable as it cannot dry once the joint is assembled. Hot melt (glue gun) glue is a suitable alternative.